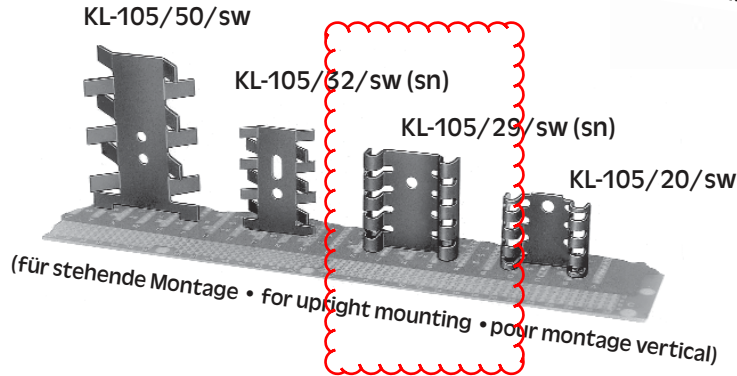
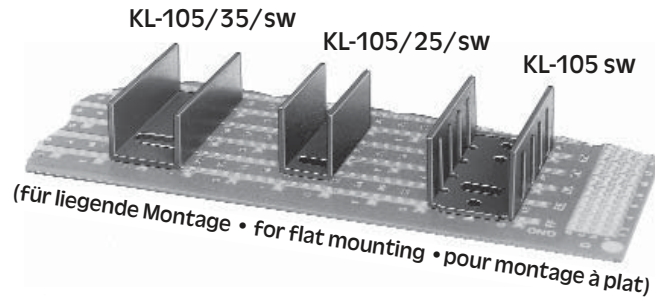




- für Halbleiter im Plastikgehäuse
- for plastic-cased semiconductors
- pour semi-conducteurs dans boîtiers plastique



Gefertigt aus Al 99, Oberfläche schwarz eloxiert, geeignet für liegende bzw. stehende Montage von Plastiktransistoren im TO-220 Gehäuse. Die Verrippungen in den Längsseiten der Kühlkörper ergeben bei jeder Einbaulage immer optimale thermische Werte. Die Typen KL-105/29/sn, KL-105/32/sn, KL-164/sn, KL-165/sn, KL-168/sn und KL-169/sn sind verzinkt und gut lötlbar.

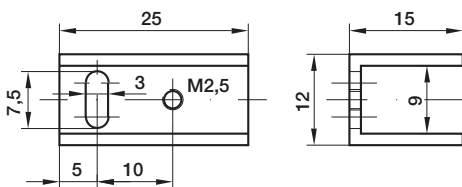
Manufactured from Al 99 and black anodized, suitable for horizontal or vertical mounting of TO-220 plastic transistors. The ribbing in the sides of the heat sinks ensures optimum thermal values in any position. Types KL-105/29/sn, KL-105/32/sn, KL-164/sn, KL-165/sn, KL-168/sn and KL-169/sn are tinned and easily solderable.

En Al 99, anodisé noir, destinés au montage à plat ou vertical de transistors plastiques en boîtiers TO-220. Les nervures latérales du dissipateur, assurent quel que soit la position de montage, un rendement thermique optimum. Les types KL-105/29/sn, KL-105/32/sn, KL-164/sn, KL-165/sn, KL-168/sn et KL-169/sn est étamé et bien brasable.

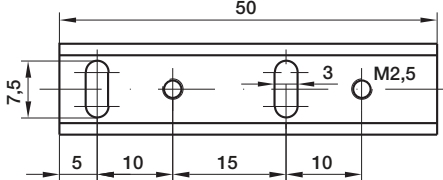
Typ	Artikel-Nr.	Länge in mm	Abmessung A	Material	Oberfläche	Thermischer Widerstand (K/W)
KL-105/sw	1050341	35		Al 99,5	sw	15
KL-105/25/sw	1051041	25	M 2,5	Al 99,5	sw	22
KL-105/25/3,2/sw	1051141	25	3,2	Al 99,5	sw	22
KL-105/35/sw	1052041	35	M 3	Al 99,5	sw	21
KL-105/35/3,2/sw	1052141	35	3,2	Al 99,5	sw	21
KL-105/20/sw	1050141	20		Al 99,5	sw	21
KL-105/29/sw	1050241	29		Al 99,5	sw	19
KL-105/29/sn	1050243	29		Al 99,5	sn	20,2
KL-105/32/sw	1050841	32		Al 99,5	sw	20,2
KL-105/32/sn	1050843	32		Al 99,5	sn	21
KL-105/50/sw	1053041	50		Al 99,5	sw	12



KL-109



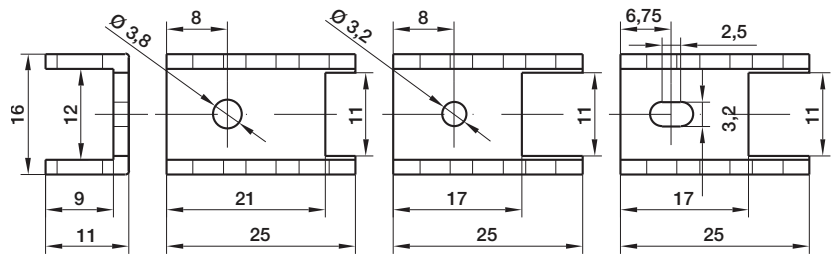
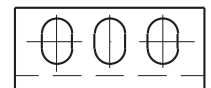
KL-109/25 sw



KL-109/50 sw



KL-112/25/A/B/C/sw

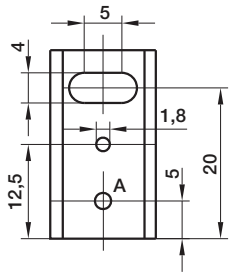
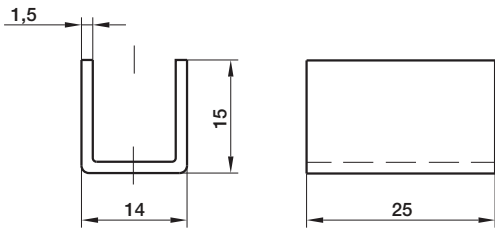


KL-112/25/a/sw

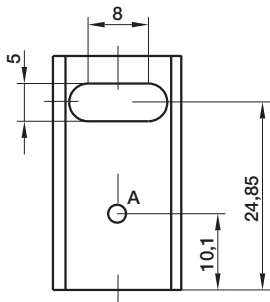
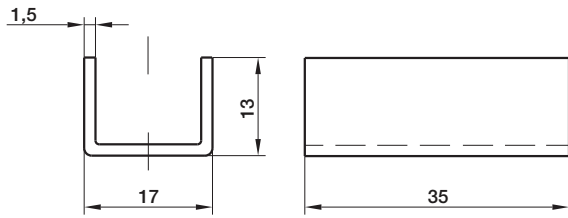
KL-112/25/b/sw

KL-112/25/c/sw

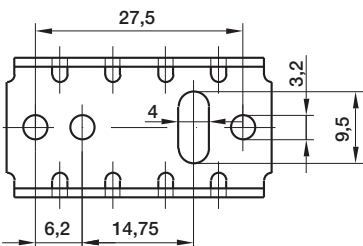
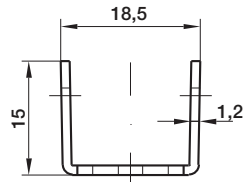
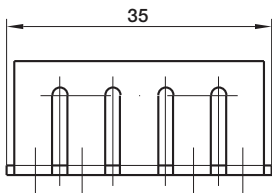
Typ	Artikel-Nr.	Länge in mm	Material	Oberfläche	Thermischer Widerstand (K/W)
KL-109/25/sw	1090841	25	Al 99,5	sw	25,5
KL-109/50/sw	1090241	50	Al 99,5	sw	12,8
KL-109/1000/m	1090900	1000	Al 99,5	m	
KL-109/1000/sw	1090901	1000	Al 99,5	sw	
KL-112/25/a/sw	1120100	25	Al 99,5	sw	18
KL-112/25/b/sw	1120110	25	Al 99,5	sw	18
KL-112/25/c/sw	1120150	25	Al 99,5	sw	18



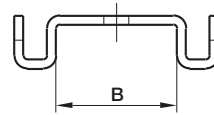
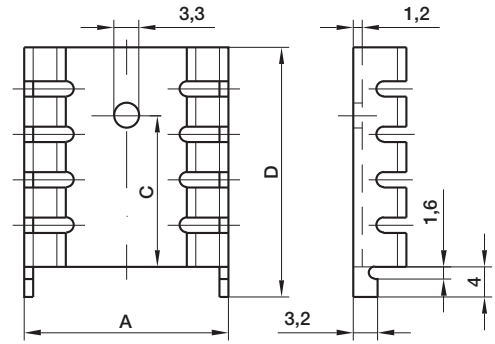
KL-105/25/sw = M 2,5
 KL-105/25/3,2/sw = Ø 3,2



KL-105/35/sw = M 3
 KL-105/35/3,2/sw = Ø 3,2

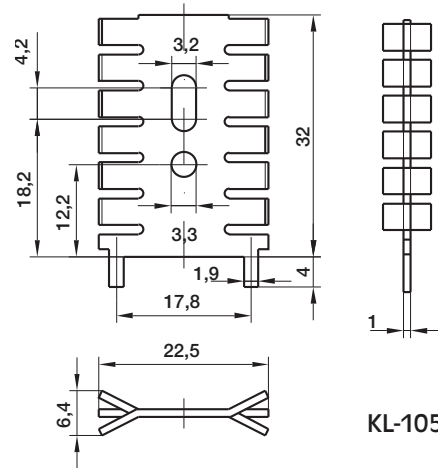


KL-105/sw

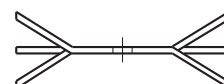
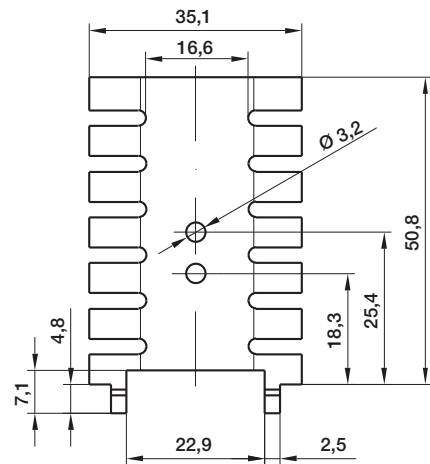


KL-105/20/29/sw (sn)

Typ	A	B	C	D
KL-105/20/sw	24	13	17	24
KL-105/29/sw(sn)	27	16	20,5	33



KL-105/32/sw (sn)



KL-105/50/sw